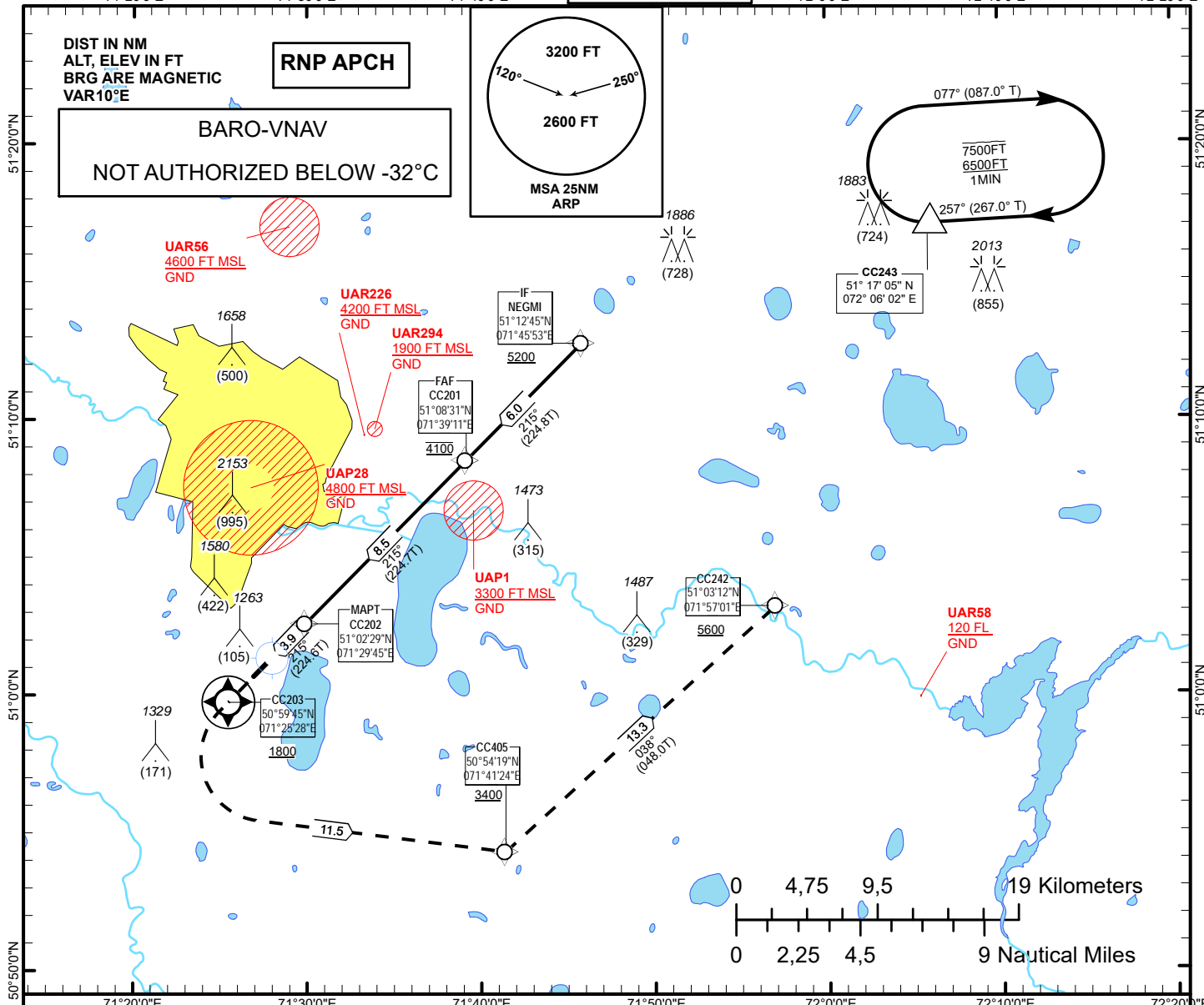


INSTRUMENT
APPROACH
CHART - ICAO

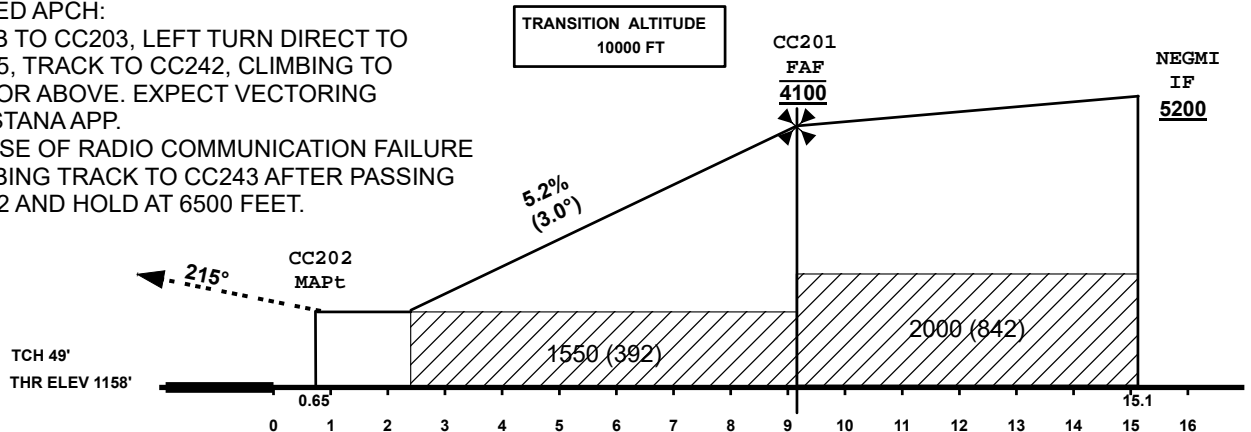
AERODROME ELEV 1166 FT
HEIGHTS RELATED TO
THR 22 ELEV 1158 FT

ASTANA TOWER 135.5
ASTANA APPROACH 124.6
ASTANA RADAR 120.7
ASTANA GROUND 119.6
ASTANA ATIS(EN) 129.5
ASTANA ATIS(RU) 128.3

ASTANA/NURSULTAN NAZARBAYEV
INTERNATIONAL AIRPORT
RNP RWY 22



MISSED APCH:
CLIMB TO CC203, LEFT TURN DIRECT TO
CC405, TRACK TO CC242, CLIMBING TO
5600 OR ABOVE. EXPECT VECTORING
BY ASTANA APP.
IN CASE OF RADIO COMMUNICATION FAILURE
CLIMBING TRACK TO CC243 AFTER PASSING
CC242 AND HOLD AT 6500 FEET.



OCA (OCH)		A	B	C	D
Straight	LNAV	1550 (392)			
	LNAV/VNAV	1430 (272)	1450 (292)	1450 (292)	1460 (302)

For data tabulation see verso

GS	Kt	80	100	120	140	160	180
Rate of descent	ft/min	420	530	640	740	850	950
PFAF-MAPT 8.3 NM	min:sec	05:27	04:21	03:38	03:07	02:43	02:25

TABULAR DESCRIPTION
RNP APCH IAP
RWY22

Serial Number	Path Descriptor	Waypoint Identifier	Fly - over	Course °M(°T)	Magnetic Variation(°)	Distance NM	Turn Direction	Altitude FT	Speed KT	VPA (°)	Navigation Specification
010	IF	NEGMI	-	-	10			+5200	-230		RNP APCH
020	TF	CC201	-	215(224.8)	10	6	-	@4100	-180		RNP APCH
030	TF	CC202	-	215(224.7)	10	8.5	-	@1414		-3.0	RNP APCH
040	CF	CC203	Y	215(224.6)	10	3.9	-	+1800	-210	+1.4	RNP APCH
050	DF	CC405	-		10	11.5	L	+3400		+1.4	RNP APCH
060	TF	CC242	-	38(48.01)	10	13.3	L	+5600	-230	+1.4	RNP APCH

WAYPOINT LIST

RNP APCH IAP RWY22		
Waypoint Identifier	Coordinates	
NEGMI	511245.30N	0714553.00E
CC201	510830.68N	0713910.95E
CC202	510229.41N	0712944.80E
CC203	505944.92N	0712528.24E
CC405	505418.51N	0714124.46E
CC242	510312.43N	0715700.84E